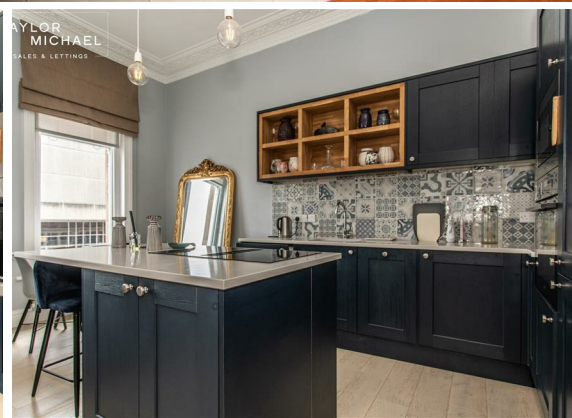




1 Bed  
Flat  
located in

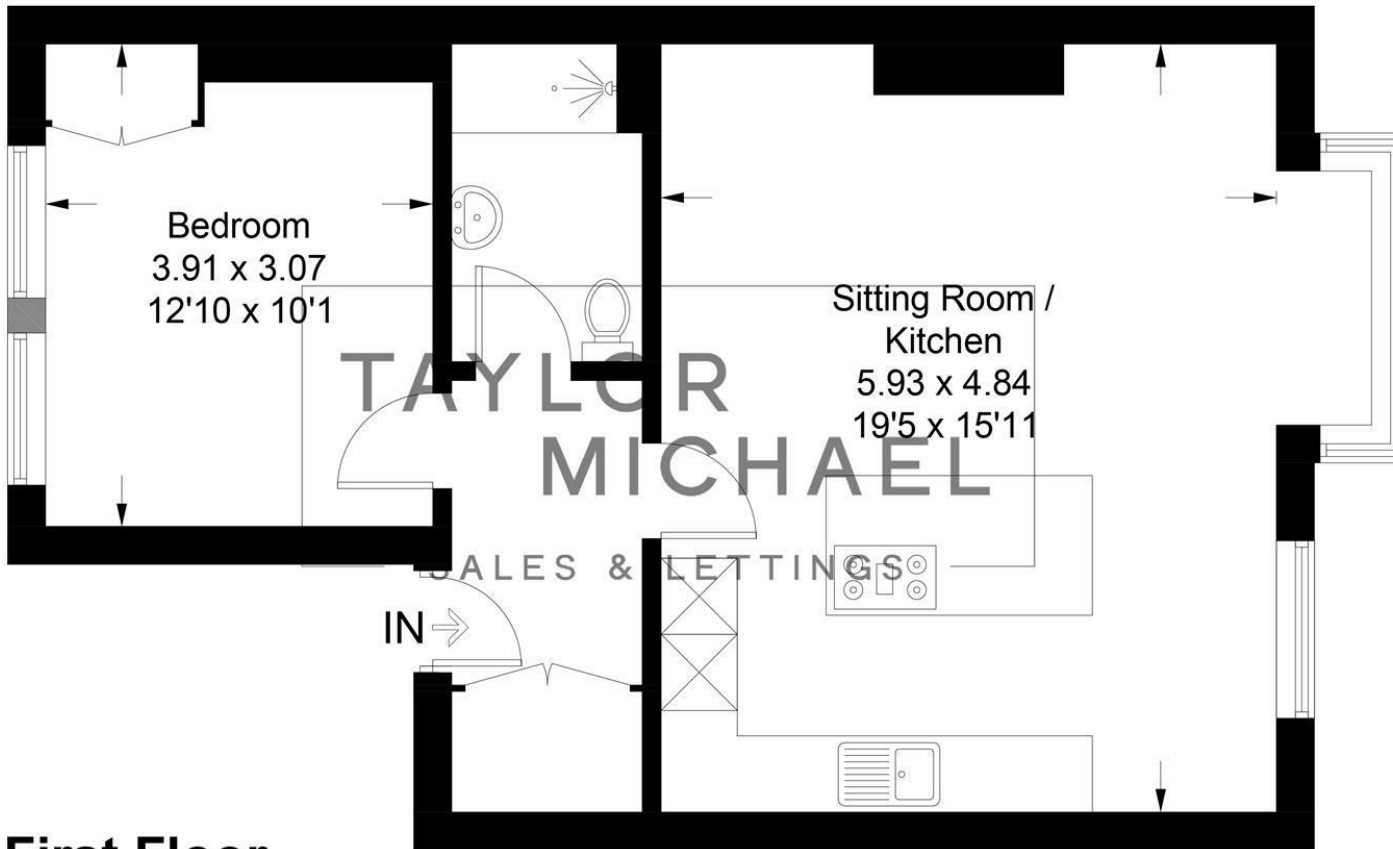
£1,650



TAYLOR  
MICHAEL

## Church Road, Hove, BN3 2EB

Approximate Gross Internal Area = 53.1 sq m / 571 sq ft



### First Floor

Illustration for identification purposes only, measurements are approximate, not to scale.  
Imageplansurveys @ 2025

#### DIRECTIONS

#### CONTACT

62 Church Road  
Hove  
East Sussex  
BN3 2FP

E: [lettings@taylormichael.agency](mailto:lettings@taylormichael.agency)  
T: 01273 600100  
<https://taylormichael.agency/>

Energy Efficiency Rating		
	Current	Potential
Very energy efficient - lower running costs		
(92 plus) A		
(81-91) B		
(69-80) C		76
(55-68) D	62	
(39-54) E		
(21-38) F		
(1-20) G		
Not energy efficient - higher running costs		
England & Wales		
EU Directive 2002/91/EC		

**TAYLOR**  
**MICHAEL**